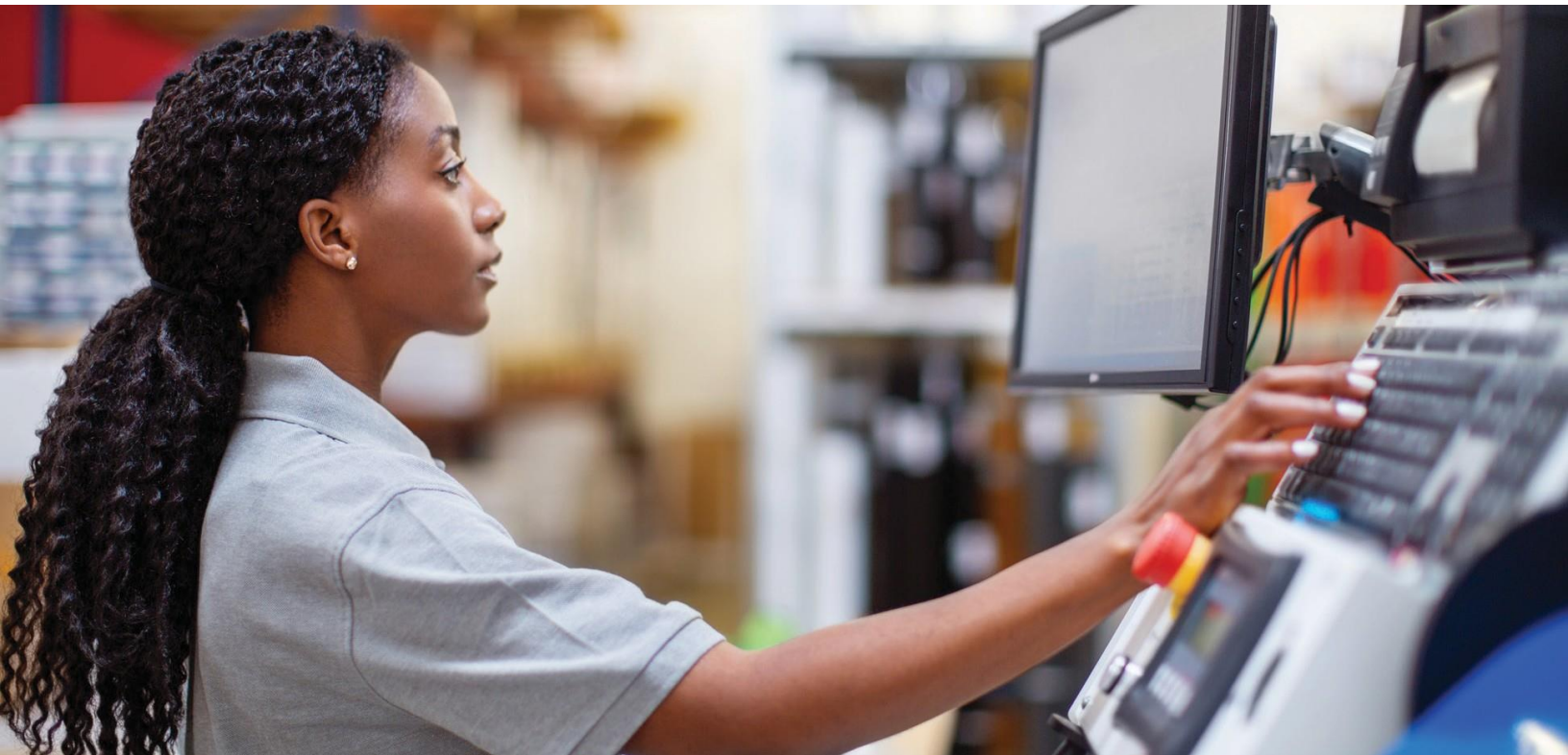


UKG Pro Activities

Improve Operational Performance with Real-Time Insights into Productivity.

Without a solution to track labour against activities, organisations can only estimate the time spent per task, causing inaccurate pay, misquoted jobs, and a lack of understanding on the actual cost to build a product. With a focus on people in everything it does, UKG Pro® Activities (formerly UKG Dimensions® Activities) for organisations to gain real-time visibility into organisational data to power more intelligent decision making, optimise efficiency, increase employee productivity, and ultimately improve operational performance.



Comprehensive Reporting

Extract and analyse data in real time via standard reports, APIs, and Dataviews to proactively align capacity with demand, keeping your people motivated and productive.



Enhanced People Experience

With Activities, your people can view and track relevant, tailored information to their specific role and location on the device of their choice.



Timely Comprehensive Updates

Activities enables you to stay in sync with external Enterprise Resource Planning (ERP) systems through bidirectional interface capabilities providing seamless communication and preserving data integrity.

Key benefits

For managers

Identify and deploy your most productive performers

Gain real-time visibility into items that are a work in progress

Streamline operations by identifying and removing bottlenecks

Quickly reallocate and optimise critical labour resources to meet production deadlines

Assess critical KPIs such as productivity, efficiency, and direct vs. indirect time

Simplify system interaction with the logical guided workflow for your people with pre-built templates

Develop accurate labour standards by understanding variances between actual and standard performance

Automate reconciliation of labour hours to payroll

Key features of UKG Pro Activities

- Improved accuracy by introducing logic to show only necessary fields with Smart Forms
- Robust API integration powered by Boomi with easier access to API set expansions
- Accurate activity selection with new business structure framework
- Activity data directly integrated into employee timecard
- Activity exceptions highlight relevant missing data such as orphan, idle, or missing result
- Third-party integration with ERP systems which only sends and receives what is relevant or changed
- Visibility into allocated versus actual hours